

What Do I Need

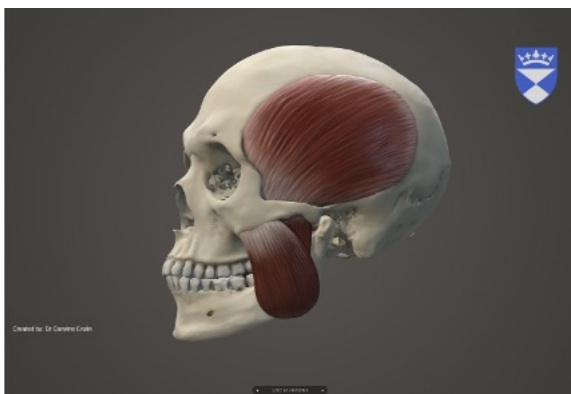
- A phone, tablet or computer to load a model from Sketchfab
- A sheet of paper
- Drawing or painting materials, such as pencils, paint, pastels etc

What Do I Do

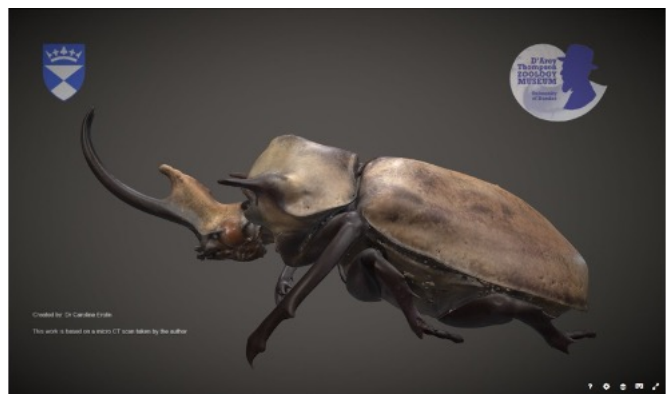
- Using a phone, tablet or computer, have a look through the following Sketchfab links and choose a model that appeals to you:

○ https://sketchfab.com/anatomy_dundee

○ https://sketchfab.com/uod_museums



Skull model from Sketchfab anatomy_dundee



Rhinoceros beetle scan from Sketchfab uod_museums

- Move and rotate the model to a position that you like.
- Either keep the model on the screen or print it off as reference.
- Using the paper and drawing/painting materials, have a go at drawing the model.
- (Optional) If you like, have a go at looking up the subject you choose further. Search for it online - can you find out what the parts are called and add labels?

