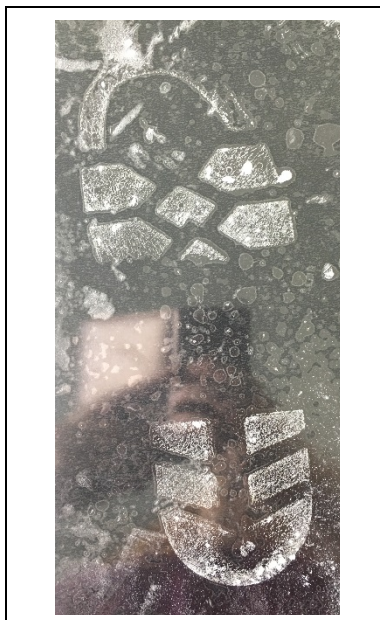


# THE TROPHY ROBBERY

## EVIDENCE SHEET 5: FOOTWEAR MARK

Footwear mark found at the scene



Footwear marks collected from the suspect's shoes

Suspect 1	Suspect 2	Suspect 3
A photograph of a footwear mark from Suspect 1. The mark is a dark, textured impression on a light-colored surface. It shows a tread pattern with several circular studs arranged in a row across the arch and heel.	A photograph of a footwear mark from Suspect 2. The mark is a dark, textured impression on a light-colored surface. It shows a tread pattern with a central arch and a heel patch, matching the mark found at the scene.	A photograph of a footwear mark from Suspect 3. The mark is a dark, textured impression on a light-colored surface. It shows a tread pattern with a grid of small squares across the arch and heel.

Which Footwear mark matches the one found at the museum?